



Model: WS SB FOR IPAD MINI6 +ETHERNET

Model No.: 002-1-423E

Family: WALL-SMART

DWG NO. 002-4-423E-SPC

PRODUCT SPEC.

REVISION A

DATE 28/MAY/2024



Make Your Wall Smart

“WS SB FOR IPAD MINI6 +ETHERNET” - Product description:

The “WS SB FOR IPAD MINI6 +ETHERNET” is an adapter for in-wall flush installation of IPAD MINI 6 in solid board walls.

The “WS SB FOR IPAD MINI6 +ETHERNET” firmly mounts the iPad while allowing easy insertion, removal and operation.

Key features and benefits:

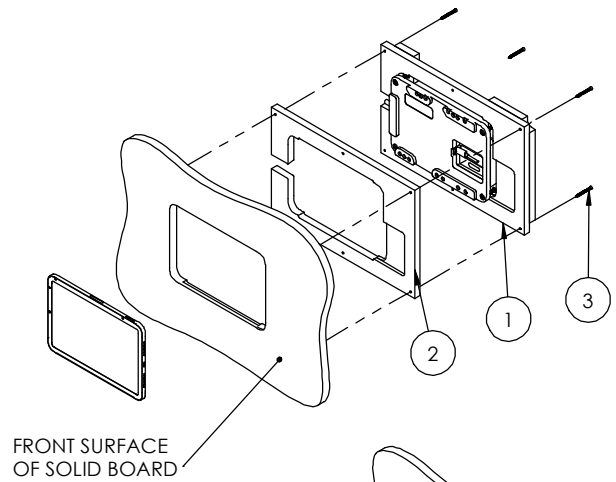
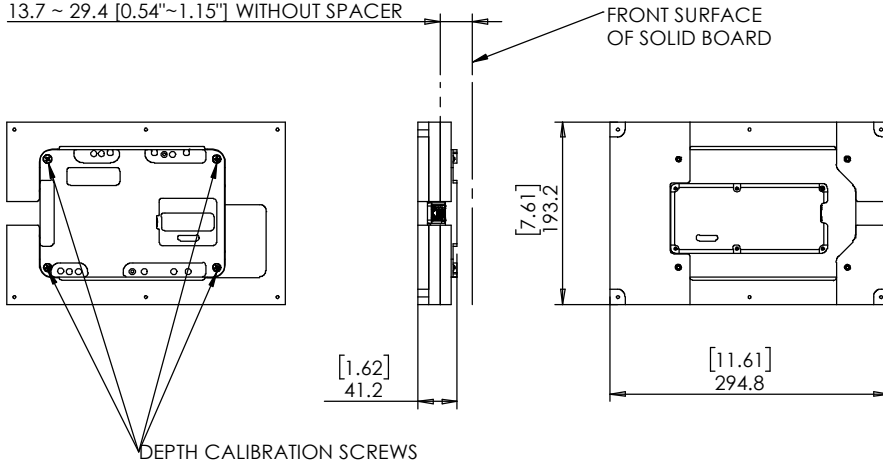
- Flush with the solid surface wall.
- Wall mount may be mounted in any orientation.
- Allows easy insertion and removal of the iPad.
- Wall mount contains depth calibration screws and spacer allowing installation in a wide range of board thicknesses:
With spacer: 2.1mm ~ 17.3mm [0.08" ~ 0.7"] thick.
Without spacer 13.7mm ~ 29.4mm [0.54" ~ 1.15"] thick.
- Includes 10/100 ethernet connectivity.
- See page 4 for routing dimensions.
- **NOTICE:** calibrate iPad depth 1.5mm beneath front surface.
- Designed for the use with iPad MINI 6 (by Apple) (iPad is not included).
- Adapter kit contains:
 1. Wall adapter (X1)
 2. routing template (X1)
 3. ST3x40 screws (X6)

Key properties:

- Dimensions: (W/H/D): 294.8mm (11.61")/ 193.2mm (7.61")/ 41.2/ (1.62")
- Power Supply: Wall mount includes POE to USB converter with Ethernet.
The installer should connect the wall mount to an IEEE 802.3at POE+ power source via CAT6 cable and RJ45 connector.
(Please verify the power source can supply up to 25.5W)
- See page 3 for ethernet configuration.
- In case Ethernet connectivity is not necessary, consider using SKU# 002-1-423 with charging capability only.
- Weight: 0.9Kg, 1.98lbs.
- Material: Moisture resistant MDF (compliant with TSCA Title VI)

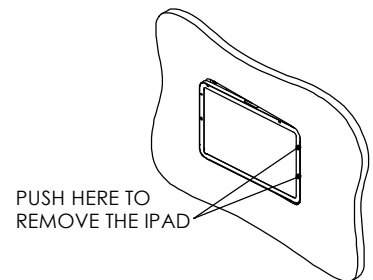
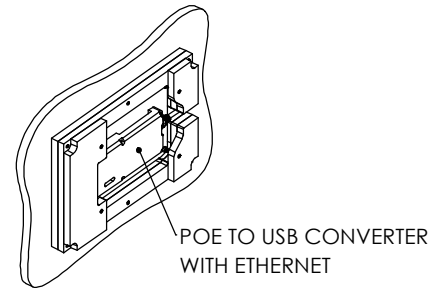
iPad® is a trademark of Apple Inc., registered in the U.S. and other countries.

SOLID BOARD THICKNESS RANGE:
2.1 ~ 17.3 [0.08"~0.7"] WITH SPACER
13.7 ~ 29.4 [0.54"~1.15"] WITHOUT SPACER



IN CASE OF INSTALLATION IN WOOD USE SCREWS, OTHERWISE APPLY STRUCTURAL ADHESIVE

FOR BOARDS THINNER THAN 17.3mm [0.7"] USE SPACER





Model: WS SB FOR IPAD MINI6 +ETHERNET

Family: WALL-SMART

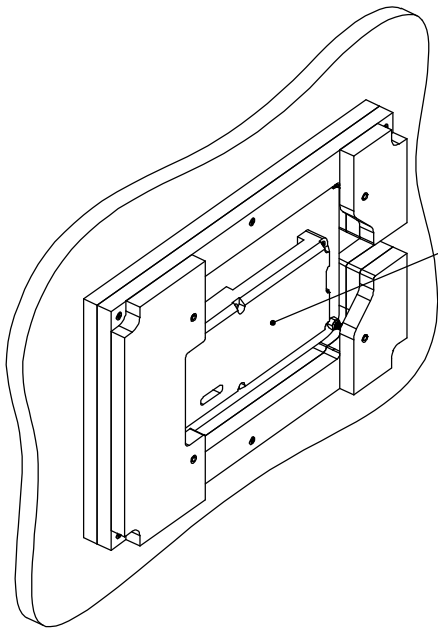
DWG NO. 002-4-423E-SPC

Model No.: 002-1-423E

PRODUCT SPEC.

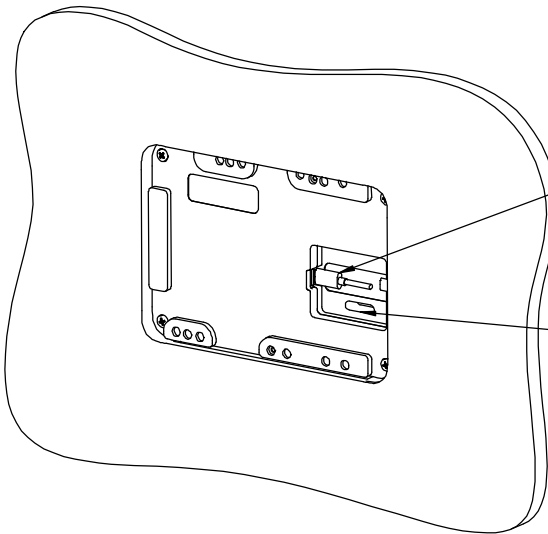
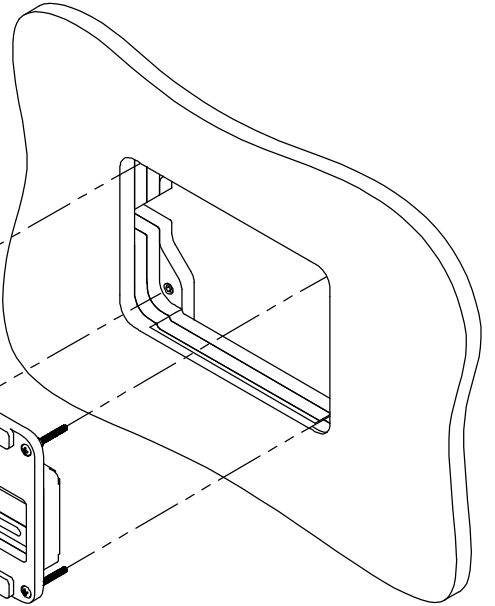
REVISION A

DATE 28/MAY/2024



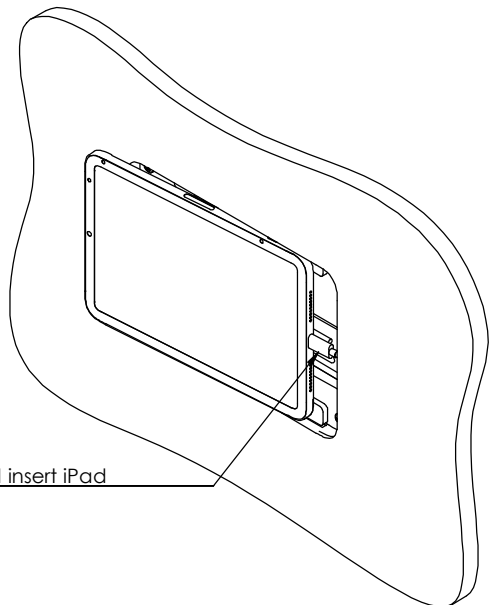
Before installation of the wall mount, connect a 48V IEEE 802.3at POE+ power source via a CAT5/6 cable and RJ45 connector to the POE to USB converter with ethernet.

If required, it is possible to gradually unscrew the 4 depth calibration screws, remove the platform and connect the POE cable after the wall mount was installed.



Connect iPad USB-C cable to POE to USB converter

Organize the cable in the cable slit



Connect USB-C connector to the iPad and insert iPad



Model: WS SB FOR IPAD MINI6 +ETHERNET

Family: WALL-SMART

DWG NO. 002-4-423E-SPC

Model No.: 002-1-423E

PRODUCT SPEC.

REVISION A

DATE 28/MAY/2024



POE to USB converter with Ethernet - Product Specifications

- USB Connector: Type C
- Data Rate: 10/100
- Input Voltage Range: 44-56 volts (IEEE 802.3at compliant)
- Max Power Output: 25 watts
- Operating Humidity: 5% to 90%
- Operating Temperature Range: -10 – 60c
- Output Voltage: 5V,2.6A; 9V,1.78A; 12V,1.34A; 15V,1.37A; 20V,1.15A
- Power Input: 25.5 watts
- iPad operation system version must be iOS 12.2 or later.

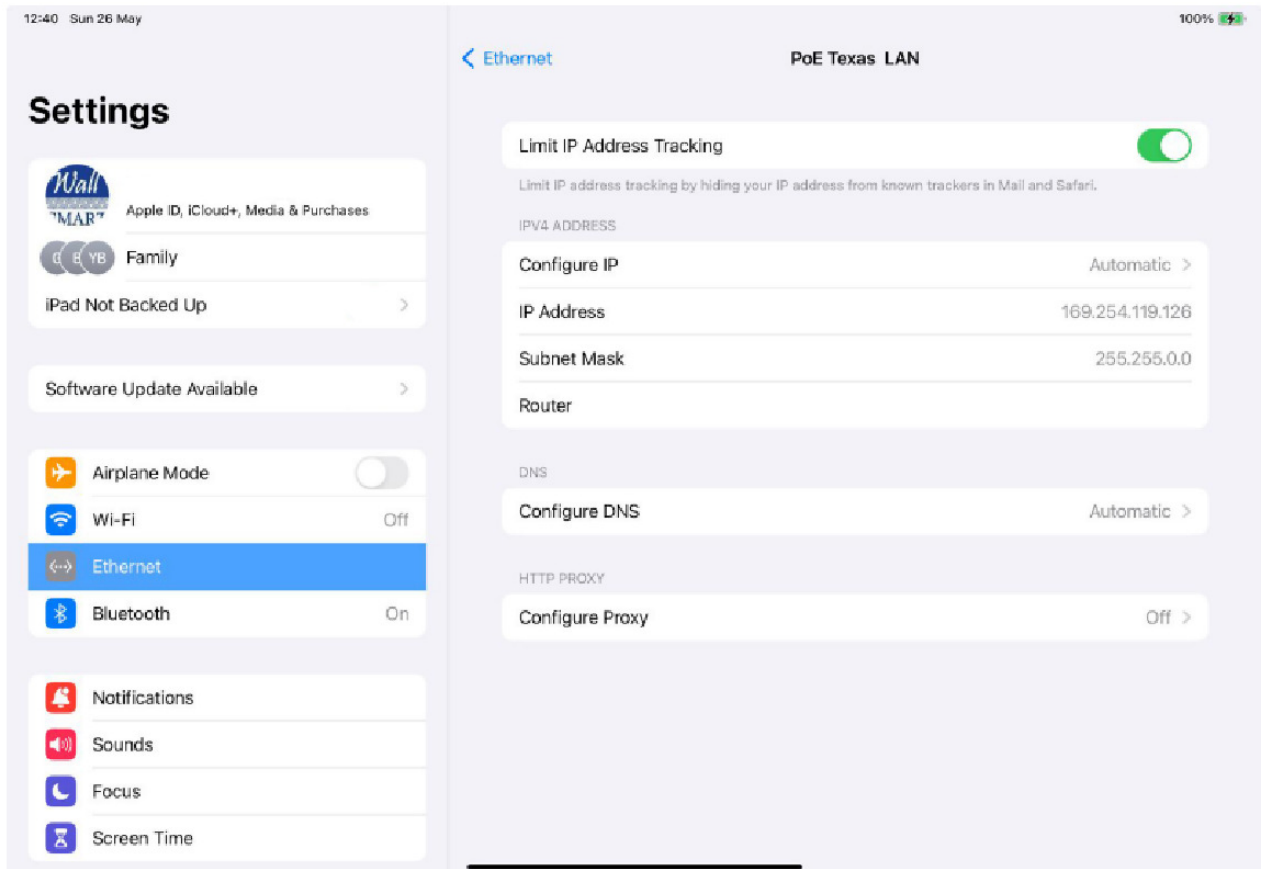
Connection steps:

1. Plug the RJ-45 connector into an IEEE 802.3at PoE (POE+) with a data source.
2. Ensure the device you're connecting to is on and logged in.
3. Plug the USB-C connector into the mount.

The converter will automatically set up the network connection with your device and begin charging.

Configuring the IP:

1. Navigate to Settings and go to "Ethernet".
2. After selecting you'll see all the options for PoE Texas LAN, and your IPV4 IP address information. If it shows "Automatic", that means you're getting a dynamically assigned IP address.
3. If you'd like to reconfigure the IP address, DNS, and HTTP Proxy settings, you can do that here.
The most used option will be fixing your IP address by selecting the "Automatic" button.



MARK 6 SCREW POSITIONS

