



Model: SB FOR BLACK NOVA 1MODULE LOW V

Family: WALL-SMART

DWG NO. 084-4-246-SPC



Model No.: 084-1-246

PRODUCT SPEC.

REVISION A

DATE 16/AUG/2021

Make Your Wall Smart

“WS SB FOR BLACK NOVA 1MODULE LOW V” - Product description:

The “WS SB FOR BLACK NOVA 1MODULE LOW V” is an adapter for in-wall flush installation of an BLACK NOVA 1MODULE LOW V keypad in solid board walls.

The “WS SB FOR BLACK NOVA 1MODULE LOW V” firmly mounts the keypad while allowing easy access, insertion and removal.

FOR LOW VOLTAGE USE ONLY!

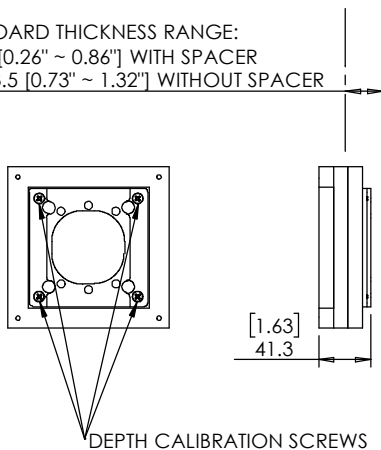
Key features and benefits:

- Allows easy insertion and removal.
- Flush with the wall.
- Allows easy maintenance access.
- Includes depth calibration mechanism and a spacer allowing installation in wide range of board thicknesses:
With spacer: 6.5mm ~ 22mm [0.26" ~ 0.86"] thick.
Without spacer 18.5mm ~ 33.5mm [0.73" ~ 1.32"] thick.
- Use routing template as spacer.
- Designed for the use with 1MODULE LOW V keypad by BLACK NOVA (not included).
- Installation kit contains:
 1. Wall adapter (x1)
 2. keypad adapter (x1)
 3. Routing template (x1)
 4. ST3x40 screws (x4)
 5. CS M3X10 Screws (x4)
 6. M3 Nuts (x4)

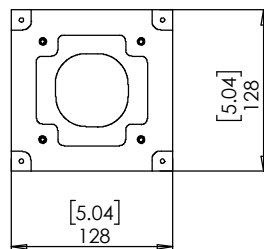
Key properties:

- Dimensions (W/H/D): 128mm (5.04")/ 128mm (5.04")/ 41.3mm (1.63")
- Power Supply: None (manual adapter).
- Weight: 0.3Kg, 0.66lbs.
- Material: Moisture resistant MDF

SOLID BOARD THICKNESS RANGE:
6.5 ~ 22 [0.26" ~ 0.86"] WITH SPACER
18.5 ~ 33.5 [0.73" ~ 1.32"] WITHOUT SPACER



FRONT SURFACE OF SOLID BOARD



PUSH TO OPEN

IN CASE OF INSTALLATION IN WOOD USE SCREWS, OTHERWISE APPLY STRUCTURAL ADHESIVE

FOR WALLS THINNER THEN 22mm[0.86"] USE ROUTING TEMPLATE AS INSTALLATION SPACER

FRONT SURFACE OF SOLID BOARD



Model: SB FOR BLACK NOVA
1MODULE LOW V

Family: WALL-SMART

DWG NO. 084-4-246-SPC

Model No.: 084-1-246

PRODUCT SPEC.

REVISION A

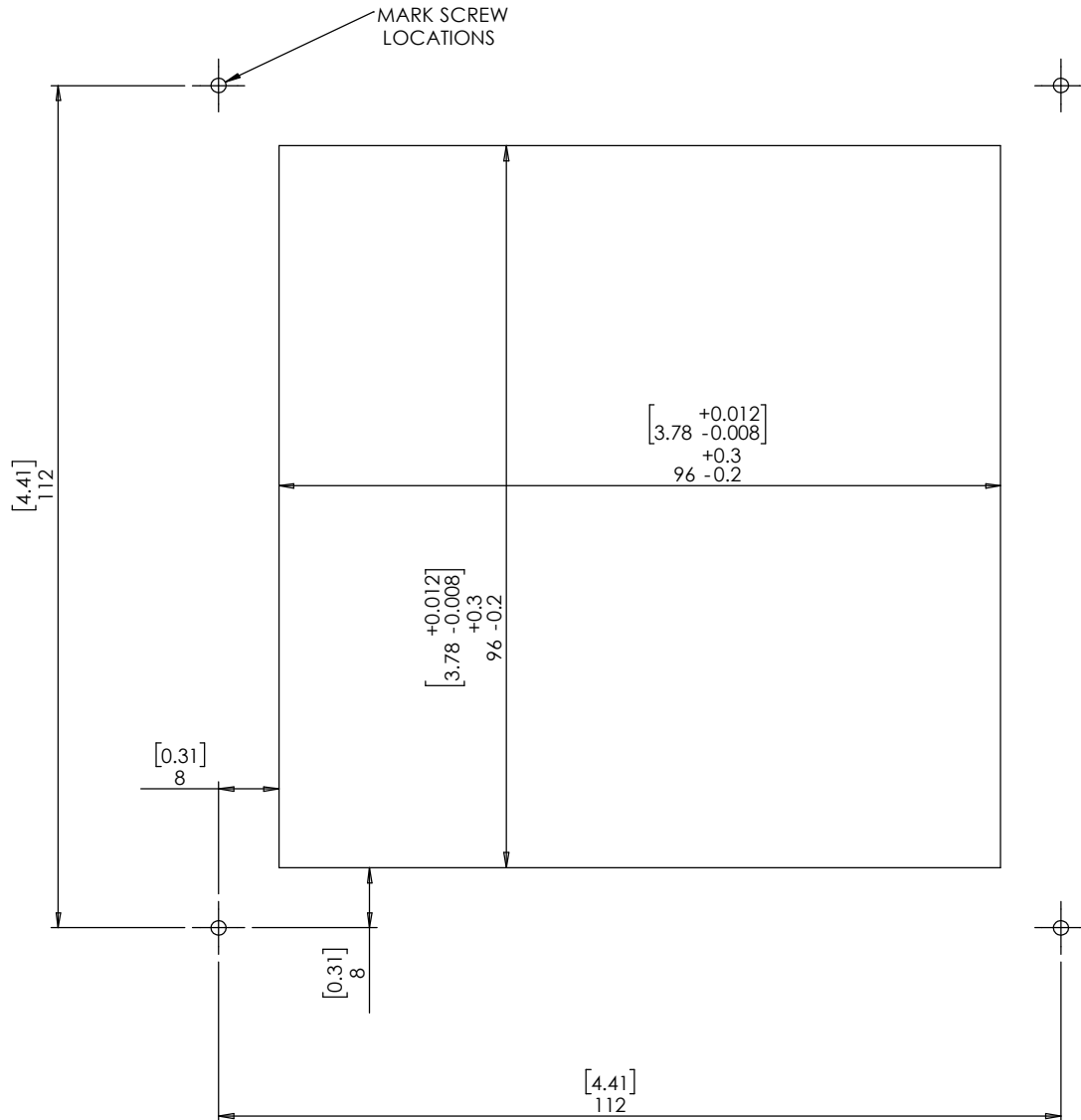
DATE 16/AUG/2021



ROUTING TEMPLATE

084-1-246

1:1 SCALE



PRINT THIS PAGE 1:1 SCALE