



Model: WS SB FOR URC TKP-7600

Family: WALL-SMART

DWG NO. 032-4-754-SPC



Model No.: 032-4-754

PRODUCT SPEC.

REVISION A

DATE 15/SEP/2021

Make Your Wall Smart

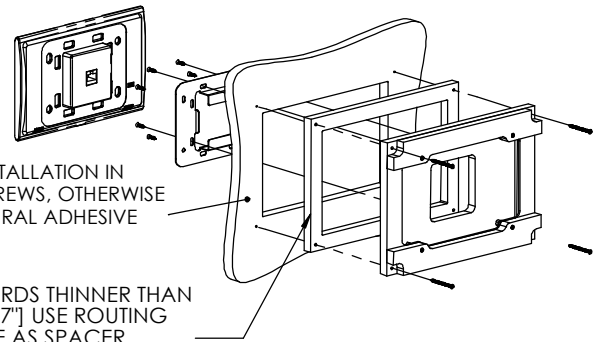
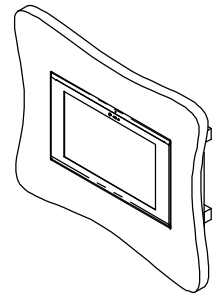
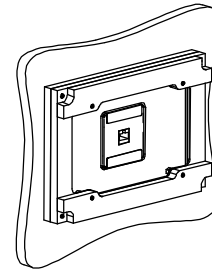
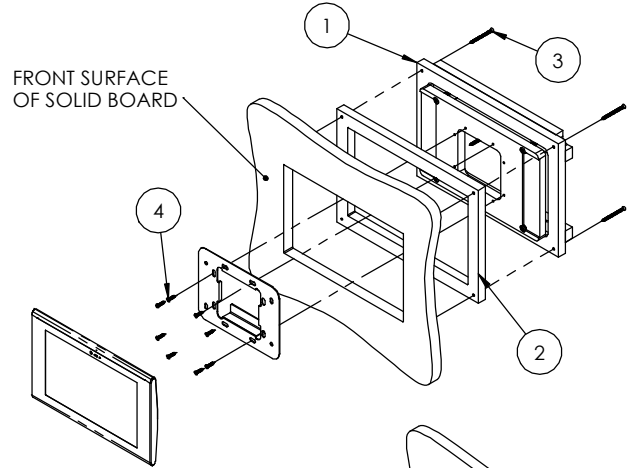
“WS SB FOR URC TKP-7600- Product description:

The “WS SB FOR URC TKP-7600” is an adapter for in-wall flush installation of a TKP-7600 Touch screen in solid board walls.

The “WS SB FOR URC TKP-7600” firmly mounts the device while allowing easy access, insertion and removal.

Key features and benefits:

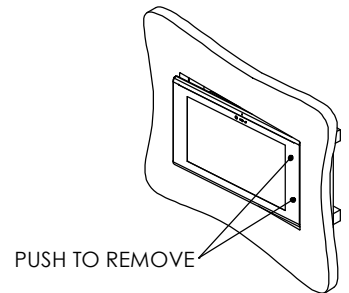
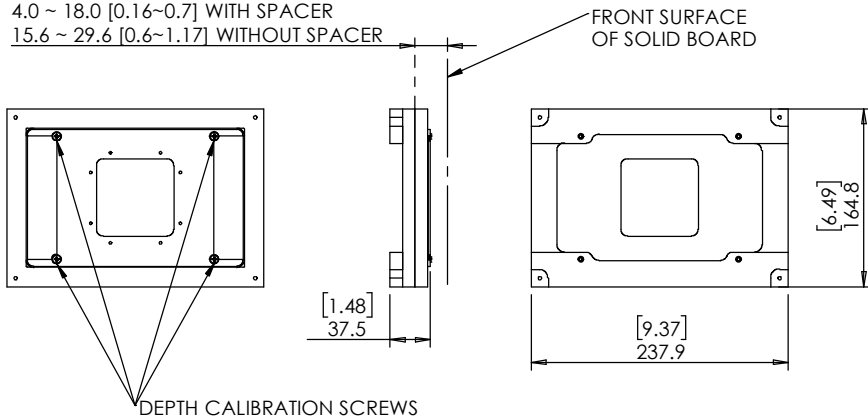
- Allows easy insertion and removal.
- Flush with the wall.
- Allows easy maintenance access.
- Includes depth calibration mechanism and a spacer.
- allowing installation in wide range of board thicknesses:
With spacer: 4mm ~ 18mm [0.16" ~ 0.7"] thick.
Without spacer 15.6mm ~ 29.6mm [0.6" ~ 1.17"] thick.
- Use routing template as spacer.
Designed for the use with TKP-7600 touch screen (by Universal Remote Control, Inc.) (not included).
- Installation kit contains:
 1. Wall adapter (x1)
 2. Routing template (x1)
 3. ST3x40 screws (x4)
 4. ST3x13 Screws (x8)



Key properties:

- Dimensions (W/H/D): 237.9mm (9.37")/ 164.8mm (6.49")/ 37.5mm (1.48")
- Power Supply: None (manual adapter).
- Weight: 0.5Kg, 1.1lbs.
- Material: Moisture resistant MDF (compliant with TSCA Title VI)

SOLID BOARD THICKNESS RANGE:
4.0 ~ 18.0 [0.16~0.7] WITH SPACER
15.6 ~ 29.6 [0.6~1.17] WITHOUT SPACER





Model: WS SB FOR URC TKP-7600

Family: WALL-SMART

DWG NO. 032-4-754-SPC



Model No.: 032-4-754

PRODUCT SPEC.

REVISION A

DATE 15/SEP/2021

MARK SCREW
LOCATIONS

CUTOUT ROUTING TEMPLATE

032-1-754

SCALE 1:1

[0.04]
R1 TYP

[8.74]
221.9

[5.07 +0.012
-0.008]
+0.3
128.8 -0.2

[7.95 +0.012
-0.008]
+0.3
201.9 -0.2

[0.39]
10

[0.39]
10

[5.86]
148.8

PRINT THIS PAGE 1:1 SCALE